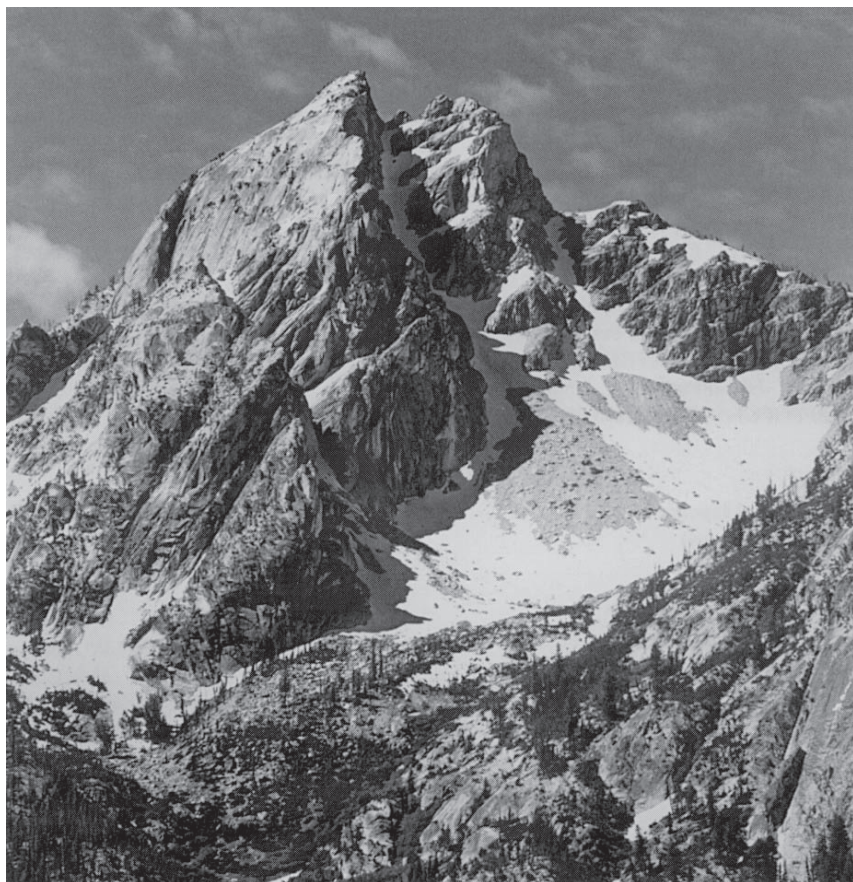


IDAHO PROFILE



McGowan Peak in the Sawtooth Mountain Range, named for George McGowan, one of the first settlers in the Stanley Basin country in the early 1860s.

Idaho Symbols

NAME: Originally suggested for Colorado, the name “Idaho” was used for a steamship which traveled the Columbia River. With the discovery of gold on the Clearwater River in 1860, the diggings began to be called the Idaho mines. “Idaho” is a coined or invented word, and is not a derivation of an Indian phrase “E Dah Hoe (How)” supposedly meaning “gem of the mountains.”

NICKNAME: The “Gem State”

MOTTO: “Esto Perpetua” (Let it be perpetual)

DISCOVERED BY EUROPEANS: 1805, the last of the 50 states to be sighted.

ORGANIZED AS TERRITORY: March 4, 1863, act signed by President Lincoln.

ENTERED UNION: July 3, 1890, 43rd state to join the Union.

Geography

LAND AREA: 83,557 square miles, 13th in area size

WATER AREA: 880 square miles

HIGHEST POINT: 12,662 feet above sea level at the summit of Mt. Borah, Custer County in the Lost River Range

LOWEST POINT: 770 feet above sea level at the Snake River at Lewiston

LENGTH: 479 Miles

WIDTH: 305 miles at widest point

GEOGRAPHIC CENTER: Settlement of Custer on the Yankee Fork River, Custer County.

NUMBER OF LAKES: More than 2,000

NAVIGABLE RIVERS: Snake, Coeur d’Alene, St. Joe, St. Maries and Kootenai.

LARGEST LAKE: Lake Pend Oreille, 180 square miles.

TEMPERATURE EXTREMES: Highest, 118° at Orofino July 28, 1934; Lowest, -60° at Island Park Dam, January 18, 1943.

2000 POPULATION: 1,293,953, 39th among states. (U.S. Census Bureau)

Elected State Officials

Terms began January 6, 2003

Terms expire January 1, 2007

(Four Year Terms)

Governor

Dirk Kempthorne

Lieutenant Governor

Jim Risch

Secretary of State

Ben Ysursa

State Controller

Keith Johnson

State Treasurer

Ron Crane

Attorney General

Lawrence Wasden

Superintendent of Public Instruction

Marilyn Howard

Congressional Delegation

Senators, 6 year terms

House of Representatives, 2 year terms

United States Senator

Larry Craig

United States Senator

Mike Crapo

U.S. House of Representatives, 1st District

C.L. "Butch" Otter

U.S. House of Representatives, 2nd District

Mike Simpson

Official State Holidays

Every Sunday	
New Year's Day	January 1
Martin Luther King, Jr.-Human Rights Day	Third Monday in January
Washington's Birthday	Third Monday in February
Decoration Day	Last Monday in May
Independence Day	July 4
Labor Day	First Monday in September
Columbus Day	Second Monday in October
Veterans Day	November 11
Thanksgiving Day	Fourth Thursday in November
Christmas	December 25

Every day appointed by the President of the United States, or by the governor of this state, for a public fast, thanksgiving, or holiday. Any legal holiday that falls on Saturday, the preceding Friday shall be a holiday and any legal holiday enumerated herein other than Sunday that falls on Sunday, the following Monday shall be a holiday. Section 73-108, *Idaho Code*.

Climate

Idaho's climate is diverse. It is influenced by Pacific weather patterns, which help moderate temperature extremes. Generally, the northern part of the state has greater precipitation than either southwestern or southeastern Idaho. The southern part of the state has warmer summer temperatures than the north and is drier throughout the year. Southeastern Idaho, however, tends to be cooler than the west and drier than the north. Idaho's growing season varies from about 200 days near the city of Lewiston to very brief at high altitudes. Idaho has no hurricanes, and tornadoes are extremely rare. Winds may accompany cold fronts and thunderstorms, but hail damage in the state is very small compared to that which occurs in the central United States. Geographically representative climate examples are:

	Elevation	Annual Mean Precipitation	Mean Snowfall	July Avg High Temp	Jan Avg Low Temp	July Avg Afternoon Humidity
Boise	2,840	12.0 in.	21.3 in.	90.5	21.2	22%
Coeur d'Alene	2,160	25.7 in.	52.2 in.	85.1	22.3	34%
Idaho Falls	4,730	10.9 in.	37.5 in.	86.0	10.0	25%
Lewiston	1,440	12.4 in.	19.8 in.	89.0	27.1	34%
Pocatello	4,450	12.2 in.	47.2 in.	88.0	14.4	38%
Twin Falls	3,960	10.5 in.	31.3 in.	85.0	19.0	27%

Source: *Idaho At A Glance*, Idaho Department of Commerce

Automobile License Plates

The state of Idaho issued its first plates in 1913, with the price determined by the value of the vehicle. There were only 2,083 plates issued that year (each vehicle receiving a single plate). Motorcycles were not issued an actual license plate. Instead, the owners simply painted their registry number, state, and year of manufacture on the rear mud guard. In 1917, motorcyclists received their first actual motorcycle plates. Back then, if a license plate was lost, the motorist could purchase a blank replacement plate that was flat where the numbers would typically be embossed. The owner could then hand paint the license plate number in the flat area. Perhaps that is where Idaho's creative license plate designs first began. Idaho has a long history of creative plate designs, in fact, it pioneered the concept. In 1928, Idaho became the first state in the nation to feature a graphic on a license plate by proudly displaying an impressive Idaho potato that filled the entire plate. The 1940 plate commemorated 50 YEARS OF STATEHOOD,

and from 1941 to 1946 the words SCENIC IDAHO appeared on Idaho plates. 1947 plates proclaimed the state a VACATION WONDERLAND! The 1948 plate highlighted our most famous product as WORLD FAMOUS POTATOES. In 1953 and 1956, the slogan was modified to read WORLD FAMOUS POTATO, but was shortened to FAMOUS POTATOES in 1957. Displaying Idaho's passion for the outdoors, and skiing in particular, the 1947 plate featured a ski jumper. But in 1948 and 1949, the famous potato returned, this time in the form of a decal, complete with a pat of butter. From 1958 through 1968 the plates alternated between a green background with white letters to a white background with green letters. From 1968 through 1990, the standard plate format had a white background with green lettering. The award-winning 1991 issue (a modification of the optional Centennial plate) really showed the capabilities of modern vinyl graphic technique, featuring a panoramic scene of pine trees and mountains under a blazing red Idaho sky. The following types of license plates are available in Idaho: Agriculture, Appaloosa, Capitol Restoration, Centennial, Classic, Collegiate, Corvette, Famous Potatoes, FireFighter, Lewis and Clark, Medal of Honor, National Guard, Old Timer, Peace Officer, Purple Heart, Sawtooth, Snowmobile, Snowskier, Timber, Veteran, Wildlife - Bluebird, Wildlife - Cutthroat, Wildlife - Elk, Year of Manufacture and Youth.



Source: Idaho Motor Vehicle Division
<http://www2.state.id.us/itd/dmv/index.htm>

Automobile License Prefixes by County

Ada	1A	Butte	10B	Gem	1G	Minidoka	2M
Adams	2A	Camas	1C	Gooding	2G	Nez Perce	N
Bannock	1B	Canyon	2C	Idaho	I	Oneida	1O
Bear Lake	2B	Caribou	3C	Jefferson	1J	Owyhee	2O
Benewah	3B	Cassia	4C	Jerome	2J	Payette	1P
Bingham	4B	Clark	5C	Kootenai	K	Power	2P
Blaine	5B	Clearwater	6C	Latah	1L	Shoshone	S
Boise	6B	Custer	7C	Lemhi	2L	Teton	1T
Bonner	7B	Elmore	E	Lewis	3L	Twin Falls	2T
Bonneville	8B	Franklin	1F	Lincoln	4L	Valley	V
Boundary	9B	Fremont	2F	Madison	1M	Washington	W

State Song

The music for the Idaho state song, composed by Sallie Hume Douglas, was copyrighted on November 4, 1915, under the title "Garden of Paradise." In 1917, McKinley Helm, a student at the University of Idaho, wrote the verse which became the chorus of the Idaho State song, and Alice Bessee set the words to the music. The song was popular then, and Alice Bessee had no idea of its origin. This song won the annual University prize for that year, and eventually became the University alma mater. Albert J. Tompkins, Director of Music in the Boise Public Schools, wrote a set of verses for the song. In 1931, the Idaho legislature designated "Here We Have Idaho" previously known at the University of Idaho as "Our Idaho" as the Idaho state song.

HERE WE HAVE IDAHO

Official Idaho State Song by Enactment of Twenty-first Session of Idaho Legislature.

Verses by Albert J. Tompkins

Chorus by McKinley Helm

Music by Sallie Hume-Douglas

You've heard of the wonders our land does possess Its beau-ti-ful val-leys and hills — The
There's truly one state in this great land of ours Where i-deals can be re-a-lized — The

ma-jes-tic for-ests where na-ture a-bounds We love every nook and rill
pi-o-neers made it so for you and me A le-ga-cy we'll al-ways prize

And here we have I-da-ho — Winning her way to fame — Sil-ver and gold in the sun-light

blaze, And ro-mance lies in her name. — Sing-ing we're singing of you, Ah, proud-ly too,

All our lives thru, we'll go Sing-ing, sing-ing of you, Sing-ing of I-da-ho —

You've heard of the wonders our land does possess
It's beautiful valleys and hills;
The majestic forests where nature abounds,
We love every nook and rill.
There's truly one state in this great land of ours,
Where ideals can be realized;
The pioneers made it so for you and me,
A legacy we'll always prize.

CHORUS

And here we have Idaho,
Winning her way to fame;
Silver and gold in the sunlight blaze,
And romance lies in her name;

Singing, we're singing of you,
Ah, proudly, too, All our lives thru,
We'll go singing, singing of you,
Singing of Idaho.

To hear a recorded version of Idaho's State Song go to:
<http://www2.state.id.us/gov/fyi/song/index>

Idaho State Emblems



State Bird

The **Mountain Bluebird** (*Sialia arctica*) was adopted as the state bird for Idaho by the legislature in 1931. The Bluebird is 6 to 7 inches long and is a member of the Thrush family. Male Bluebirds are a pale sky blue over most of their body, darker on their back. Females are blue-grey with blue wings and tail, duller than the male. Juvenile birds have blue wings with the tail area duller than the adult male, a white eye ring and spotted underparts. Mountain Bluebirds live in open grasslands and nest in holes in trees, crevices and nesting boxes. They have a zig-zagging flight pattern that easily identifies them.

Photo courtesy of: Jack Trueblood

State Dance

The 1989 legislature designated the **square dance** as the American Folk Dance of Idaho. Two of the most commonly cited ancestors to modern square dance are the English Morris dance and the French Quadrille. It is the Quadrille that most point to as the grand-daddy of our modern square dance. One of the earliest records of this type of dance in America is contained in the works of John Playford, a musician and dancing master. His book, "The English Dancing Master - Plaine and Easy Rules for the Dancing of Country Dances, with Tunes to Each Dance" was published in seventeen editions between 1650 and 1728 and contained 918 dances. As the pioneers moved westward, many of the dances were lost or forgotten, but many were preserved, particularly in the southern Appalachians where the running set established itself as one of the deep taproots of western square dance. The running set even had a caller -- America's only unique contribution to the square dance.



State Fish

The **Cutthroat Trout** was designated the state fish by the 1990 legislature. The Cutthroat, along with the Rainbow and Bull Trout, is native to Idaho. The body color varies with the back ranging from steel gray to olive green. The sides may be yellow brown with red or pink along the belly. The Cutthroat name comes from the distinctive red to orange slash on the underside of its lower jaw. The scientific name for Cutthroat Trout, *Oncorhynchus clarki*, is in reference to William Clark who first described in detail the Cutthroats of the Columbia River. His partner Meriwether Lewis earlier encountered Cutthroats near the great falls of Montana's Missouri River in July of 1805. Cutthroat species found in Idaho are the Westslope Cutthroat which is found in northern and central Idaho and the Yellowstone Cutthroat which is found in southeastern Idaho.



Photo courtesy of: Tom Davenport, Ogden UT

State Flag

A silk flag, with a blue field, 5 feet 6 inches fly, 4 feet 4 inches on pike is bordered by gilt fringe 2 ½ inches wide, with the Great Seal of Idaho in the center. The words "State of Idaho" are embroidered in gold block letters two inches high on a red band below the Great Seal. Adopted by the 1907 legislature.



State Flower

The **Syringa** (*Philadelphus lewisii*) was designated the state flower of Idaho by the legislature in 1931. The species name honors Meriwether Lewis of the Lewis & Clark expedition. Lewis



wrote of the plant in his journal. It is a branching shrub growing 3 to 10 feet tall, with clusters of white, fragrant flowers. The blossoms are similar to the mock orange. It grows in open coniferous forests, at forest edge and in moist draws in drier regions providing good coverage for wildlife. Native Americans used its branches for bows, arrows and cradles.

State Fossil

The 1988 legislature designated the **Hagerman Horse Fossil** as the official state fossil.

Originally described as *Plesippus shoshonensis*, subsequent research found that the Hagerman horse is the same as a previously described species and it is now known as *Equus simplicidens*, making it the earliest-known representative of the modern horse genus *Equus*. It is now believed to be more closely related to the living Grevy's Zebra in Africa than to horses. A rich fossil bed 3.5 million years old, which has yielded over 130 complete horse skeletons, was discovered in the 1920s near Hagerman and is said to be the best known Pleistocene-epoch fossil site in the world.



Photo courtesy of: Hagerman Fossil Beds National Monument

State Fruit

Several **huckleberry** species are native to Idaho, all belonging to genus *Vaccinium* section *Myrtilus*. The most common and popular is the black or thin-leaved huckleberry (*Vaccinium membranaceum*). Plants grow slowly, taking up to 15 years to reach full maturity. Black huckleberries produce single plump, dark purple berries in the axils of leaves on new shoots.



They depend on an insulating cover of snow for survival during winter and have not been successfully grown commercially. Black huckleberries grow at elevations between 2,000 and 11,000 feet with many productive colonies between 4,000 and 6,000 feet. Black huckleberries usually grow from 1 to 6 feet tall and produce berries up to 1/2 inch in diameter. Huckleberries are a favorite food of bears.

Photo courtesy of: Danny L. Barney, Ph.D., University of Idaho

State Gem

Adopted by the 1967 legislature, the **Idaho Star Garnet** is known worldwide by collectors. Garnets are complex silicates, related to Quartz, and found almost exclusively in Idaho in Latah and Benewah counties. Star Garnets are a natural stone, not synthetically produced. Star Garnets are more rare than either Star Rubies or Star Sapphires. Normally the star in the Idaho Garnet has four rays, but occasionally one has six rays as in a Sapphire. The color is usually dark purple or plum and the star seems to glide or float across the dark surface. The star is caused by intrusions of the mineral rutile.

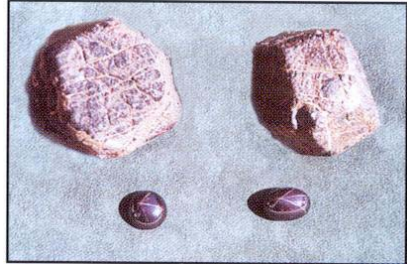


Photo courtesy of: Stewart's Gem Shop, Boise

State Horse

Historians believe the Nez Perce and Palouse tribes of Washington, Oregon and Idaho were the first tribes to breed horses for specific traits - intelligence, speed and endurance. White settlers call these horses "Palouse horses." Over time they came to be referred to as "a Palousey" and the "Appalousey." During the Nez Perce War of 1877, **Appaloosa** horses helped the non-treaty Nez Perce, under the guidance of Chief Joseph, elude the U.S. Cavalry for several months. The coloring of the Appaloosa coat is distinct in every individual horse and ranges from white blanketed hips to a full leopard. Adopted by the 1975 legislature.



Photo courtesy of: Don Shugast & The Appaloosa Horse Club

State Insect

The **Monarch Butterfly** (*Danaus plexippus*) was adopted as the state insect by the state legislature in 1992. Early settlers to North America from Europe, particularly those from Holland and England, named the butterfly "Monarch," after King William, Prince of Orange, stateholder of Holland and later named King of England. The monarchs' color suggested the name. The Monarch Butterfly is a great migrator, traveling many miles during its lifetime, which can be from a few weeks up to a year. Monarchs range in mass from .25 to .75 grams (a dime has a mass of 2.3 grams). Males are usually larger than females. Female Monarchs lay eggs on the underside of milkweed plants. The larvae then feed on the plants. Monarchs go through a complete metamorphosis in 3 to 6 weeks.



Photo courtesy of: Faye Sutherland, Boise

State Vegetable

Idaho's unique environment provides nearly perfect growing conditions for **potatoes**. The soil, water, clean air and climate in Idaho contribute to those consistently high-quality potatoes that have made Idaho famous for so many years. Idaho's rich volcanic soil is ideally suited for potatoes. Warm, sunny days, cool nights and water from melting snow in nearby mountains make the perfect combination for growing the world's best potatoes.



Photo/description courtesy: Idaho Potato Commission

State Tree

The **Western White Pine** (*Pinus Monticola pinaceae*), our state tree, is probably most notable since the largest remaining volume of this timber in the United States grows in the northern part of Idaho. White Pine has many fine qualities such as straight grain and soft even texture. Idaho's state tree grows to 175 feet with a trunk diameter from 5 to 8 feet. The largest western white pine in the world stands 219 ft. high near Elk River, Idaho. Adopted by the 1935 legislature. According to the legislative bill, it was promoted by "members of Ellen Wright Camp, Franklin County Chapter, Daughters of Pioneers."



Photo courtesy of: Idaho Forest Products Commission

History of the Great Seal of the State



*Original
Great Seal
Painting by
Emma
Edwards
Green*

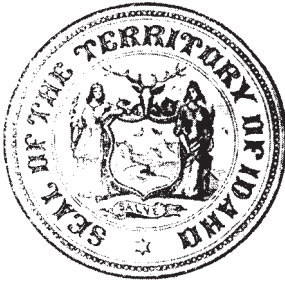
One of the most beautiful and impressive state seals, the original painting is held in trust by the Idaho State Historical Society.

Seal for Idaho Territory 1863

No official record remains of the adoption of the first Great Seal of Idaho when it became a territory in 1863. The design is attributed to Silas D. Cochran, a clerk in the office of the Secretary of State.



Idaho's Final Seal Before Statehood 1890



Dissatisfaction with the official seal caused Governor Caleb Lyon to present a seal of his own design which was accepted by the Idaho Territorial Legislature on January 11, 1866. This, too, was controversial and was redrawn several times. Nevertheless, it was used until Idaho became a state in 1890.

State Seal Now in Use

In 1957, the thirty-fourth session of the Idaho legislature authorized the updating and improvement of the Great Seal in order to more clearly define Idaho's main industries, mining, agriculture and forestry as well as highlight the state's natural beauty. Paul B. Evans and the Caxton Printers, Ltd. were commissioned to revise the seal. This painting by Paul B. Evans officially replaced the original design by Emma Edwards Green and is designated as the "Official Copy." The official Great Seal of the State of Idaho can be seen in the office of the Secretary of State.



Idaho Has the only Great Seal Designed by a Woman

Idaho became a state on July 3, 1890 and that same summer a talented young woman came to the state capitol at Boise to visit relatives. Emma Sarah Etine Edwards (later she married mining man James G. Green) was the daughter of John C. Edwards, a former Governor of Missouri (1844-48) who had emigrated to Stockton, California where he acquired large land holdings, a beautiful French Creole wife, Emma Catherine Richards, and became Mayor of Stockton, in about that order.



Emma, eldest of a family of eight, was exceptionally well educated for a woman of that period and when she dropped into Boise, it was on her way home from a year spent at art school in New York. However, what was to be a very short visit turned into a lifelong stay, for she fell in love with the charming city and its people and opened art classes where the young pioneers of the community learned to paint.

Shortly after her classes started, she was invited to enter a design for the Great Seal of the State of Idaho. Acting

on Concurrent Resolution No. 1, adopted by the First Legislature of the newest state in the union, a committee was appointed from that body and instructed to offer a prize of one hundred dollars for the best design submitted.

Artists from all over the country entered the competition, but the unanimous winner was young Emma Edwards, who became the first and only woman to design the Great Seal of a State.

She was handed the honorarium by Governor Norman B. Willey on March 5, 1891. The state flag also carries the seal centered on a deep blue background.

Emma Edwards Green had no children of her own, but assisted in rearing a nephew, Darell B. Edwards, a distinguished Oakland attorney. Ralph Edwards of "This is Your Life," also a nephew, shows a valid artistic strain flourished in the Edwards family.

Mrs. Green died in Boise January 6, 1942. She was buried beside her husband in Oakland, California.

The Idaho State Seal

By Emma Edwards Green

Before designing the seal, I was careful to make a thorough study of the resources and future possibilities of the State. I invited the advice and counsel of every member of the Legislature and other citizens qualified to help in creating a Seal of State that really represented Idaho at that time. Idaho had been admitted into the Union on July 3rd, 1890. The first state Legislature met in Boise on December 8, 1890, and on March 14th, 1891, adopted my design for the Great Seal of the State of Idaho.

The question of Woman Suffrage was being agitated somewhat, and as leading men and politicians agreed that Idaho would eventually give women the right to vote, and as mining was the chief industry, and the mining man the largest financial factor of the state at that time, I made the figure of the man the most prominent in the design, while that of the woman, signifying justice, as noted by the scales; liberty, as denoted by the liberty cap on the end of the spear, and equality with man as denoted by her position at his side, also signifies freedom. The pick and shovel held by the miner, and the ledge of rock beside which he stands, as well as the pieces of ore scattered about his feet, all indicate the chief occupation of the State. The stamp mill in the distance, which you can see by using a magnifying glass, is also typical of the mining interest of Idaho. The shield between the man and woman is emblematic of the protection they unite in giving the state. The large fir or pine tree in the foreground in the shield refers to Idaho's immense timber interests. The husbandman plowing on the left side of the shield, together with the sheaf of grain beneath the shield, are emblematic of Idaho's agricultural resources, while the cornucopias, or horns of plenty, refer to the horticultural. Idaho has a game law, which protects the elk and moose. The elk's head, therefore, rises above the shield. The state flower, the wild Syringa or Mock Orange, grows at the woman's feet, while the ripened wheat grows as high as her shoulder. The star signifies a new light in the galaxy of states. . . . The river depicted in the shield is our mighty Snake or Shoshone River, a stream of great majesty.

In regard to the coloring of the emblems used in the making of the Great Seal of the State of Idaho, my principal desire was to use such colors as would typify pure Americanism and the history of the State. As Idaho was a virgin state, I robed my goddess in white and made the liberty cap on the end of the spear the same color. In representing the miner, I gave him the garb of the period suggested by such mining authorities as former United States Senator George Shoup, of Idaho, former Governor Norman B. Willey of Idaho, former Governor James H. Hawley of Idaho, and other mining men and early residents of the state who knew intimately the usual garb of the miner. Almost unanimously they said, "Do not put the miner in a red shirt." "Make the shirt a grayish brown," said Captain J.J. Wells, chairman of the Seal Committee. The "Light of the Mountains" is typified by the rosy glow which precedes the sunrise.

Creation of the Territory of Idaho

Prior to 1868 the region destined to become Idaho passed through several territorial reorganizations. For five years (from August 14, 1848 to March 2, 1853) it was included in Oregon Territory. Then it was divided between Washington Territory and Oregon Territory until February 14, 1859. Oregon then became a state, and the entire Idaho area was attached to Washington. At that time, the land that became Idaho was expected to remain unsettled for another 50 years or so. That would have been some time into the twentieth century. Then an unexpected Idaho gold rush, a year after Oregon's admission to the Union, changed the whole situation. Miners came by the thousands, and within two years the Idaho mines (as the country was known in 1862) had gained a population a lot greater than the older settlements of Washington.

When gold was discovered at Pierce, September 30, 1860, the eastern part of Washington Territory (which included all of what is now Idaho) was undeveloped politically. The Idaho portion made up part of Spokane County, which no one had yet bothered to organize. Anticipating the Clearwater gold rush, the Washington legislature established Shoshone County, which included all the country south and east of Lewiston. In the territorial election of July 8, 1861, Shoshone County cast the largest vote in Washington, and in 1862 the Salmon River gold rush made Florence by far the biggest community in the territory. Older, more stable settlements such as Olympia and Seattle just did not compare with Florence that season. Mineral discoveries in Boise Basin, August 2, 1862, set off an even bigger gold rush to a region decidedly farther from the original settlements of western Washington. Something had to be done to provide better government for the new mining regions. Four different plans were advanced. Each was designed to fit the ambitions of one of four different communities in Washington: Olympia, Vancouver, Walla Walla, and Lewiston.

Lewiston wanted a new territory that would take in Washington east of the big bend of the Columbia River. If such a territory were to be established, Lewiston would have been a natural choice for capital. An editorial in Lewiston's pioneer newspaper, the *Golden Age*, expressed extreme dissatisfaction with Washington's government as administered from Olympia in the fall of 1862:

"Of what use to us is a capitol of Washington Territory located at Olympia on the forty-ninth parallel. During four months of last year no communication could be had with the place at all. Its distance is between seven and eight hundred miles, interspersed with hugh forests, roaring rivers, and rocky bound shores of ice, with impassable barriers of snow. One of the editors of the *Washington Statesman* was elected to the Legislature by the voters of Walla, and before he left to perform those legislative duties for his constituents, he made his will, settled all of his worldly accounts, and bid his friends adieu until next summer, and perhaps forever."

Olympia actually was not quite as far north, or quite as far away, as the *Golden Age* made out. But many people in Lewiston strongly supported the plan for making a new territory, and a citizens' meeting there firmly endorsed the project, December 28, 1862. Walla dissented. Division of Washington Territory would leave Olympia capital of the western part, and make Lewiston capital of the new mining territory that would be established. Walla preferred to keep Washington territory intact. As a compromise, after the Boise gold rush got underway, Walla was willing to return to Washington's original boundaries which included the country later to become North Idaho and western Montana. Rapid growth of the mining population was expected to lead to Washington's admission as a state in another year or two, and Walla fully expected to be state capital. Most of the Idaho miners--at least the ones that voted in the 1862 election--had favored candidates who endorsed Walla Walla's preference. The Washington legislature chosen that year opposed the plan to set up a new mining territory of Idaho, and Walla expected to become capital of Washington just as soon as reapportionment of the legislature could give control of the territory to the mining counties, which clearly had the

majority of the population. West of the Cascades, Vancouver preferred an arrangement which would have kept enough of eastern Washington to advance Vancouver's claim to be territorial capital. Lack of a wagon road across the Cascades forced traffic from Puget Sound to come through Vancouver to reach eastern Washington. Thus Vancouver aspired to become territorial capital as a compromise location between the two sections. On Puget Sound, Olympia wished to retain its status as capital. In order to prevent the mining counties from gaining a legislative majority and from taking the capital to Walla, Olympia decided that the mining region would have to be set aside as a separate territory. At the same time, Olympia wished to keep the slower growing farming areas of eastern Washington. That way state admission would not be delayed too long, and Washington would be no smaller than was absolutely necessary to preserve Olympia's power. Olympia won the fight. A new mining territory of Idaho emerged from eastern Washington, with Lewiston on its western boundary. In this boundary settlement, Olympia and Puget Sound had enough strength to hold down Vancouver and Walla once the mining counties were taken out of Washington. A. G. Henry, an Olympia agent and Washington surveyor general, recommended the line which congress adopted and which continues to separate Idaho and Washington to this day. Of the four alternate boundary and capital city arrangements, Olympia's prevailed only after a hard battle. Those who worked in Olympia's interest--to keep the eastern agricultural lands in Washington, but to put the new mines in Idaho--had plenty of strength in the United States Senate but faced a hard time in the House of Representatives. The chairman of the House committee preferred to restore Washington's original 1853 boundaries, and to establish a new mining territory of Montana for the Boise region and for the upper Missouri mines which now are in Montana but then were in Dakota. This proposal passed the House, February 12, 1863. Yet it looked entirely too risky to the Olympia forces, and the last night of the session, they got Congress to amend the boundaries to include all the Idaho mines that Olympia wished to exclude from Washington. Olympia's agents quietly had built up enough strength in the House that they were able to gain concurrence in the senate amendments which changed the boundary and restored the name "Idaho" to the new mining territory. The last morning of the session--March 4, 1863--President Abraham Lincoln approved the proposal, and Idaho became a territory of the United States. Exceeding Texas substantially in size, Idaho originally included all of present Montana, along with practically all of Wyoming as well. That arrangement was a mistake. A large mountain block divided the population of the new territory of Idaho into three distinct sections. Each of them was relatively inaccessible from the others, and in 1864, Congress decided to set up a new territory of Montana, taking the northeastern part of Idaho for the purpose. That got rid of one of the three disconnected sections, but left the other two in Idaho, still separated by a difficult mountain barrier. The remainder of the original eastern Idaho was returned temporarily to Dakota when Montana was established, May 26, 1864. Finally, when construction of the Union Pacific railroad made possible the creation of Wyoming, July 25, 1868, Idaho received its present boundaries. By that time, the territory of Idaho had been in operation for a number of years, and the foundations for a new commonwealth had been laid. When Idaho became a state, July 3, 1890, the 1868 boundaries became permanent.

Number 264 March 1969

For more information about this reference series contact:

Judith Austin
Coordinator of Publications
Idaho State Historical Society
450 N. 4th Street
Boise, ID 83702
208-334-3428
208-334-3198 (Fax)

The Lewis and Clark Trail Across Idaho

Lewis and Clark led an expedition from St. Louis in 1804 to explore the headwaters of the Missouri, which through the Louisiana Purchase had just become part of the United States. Their purpose was to take boats as far as they could up the Missouri, and then to cross the Continental Divide to the Columbia. At that time, no white man had seen Idaho, which was in the unexplored southern Columbia interior that belonged to no one. (Or at least if anyone had seen Idaho, he did not bother to say much about it.) So, when four members of the expedition, including Meriwether Lewis, ascended the Continental Divide, August 12, 1805, and reached the region later known as Idaho, the story of the white man in Idaho began.

Lewis and Clark had expected to pack their gear across the divide between navigable waters of the Missouri and of the Columbia with little difficulty. In this they were disappointed. The mountains of Idaho turned out to be the major obstacle in their entire journey, and they were fortunate indeed to get through before early winter snow blocked their passage.

Not long after he crossed into Idaho, Lewis succeeded in making contact with the Lemhi Shoshoni, who agreed to come with their horses to move the expedition's supplies across to Salmon River. When Lewis' detachment and the Shoshoni band got back to the main expedition, they discovered that Sacajawea, their Shoshoni interpreter who had been captured in 1800 by other Indians and taken east, was a member of that same Lemhi band, which now was led by her brother. While Lewis and the main expedition were hauling their equipment over the Continental Divide, Clark and a few men went ahead to see if the expedition could expect to build boats and float down the Salmon. He did not have to go too far into the canyon to tell that it was far rougher than any country he had ever seen—and the Indians assured him that he had seen nothing yet in the way of rugged canyons. So Lewis and Clark had to trade for Shoshoni horses and to go north 160 miles to the Lolo Trail over a route that an elderly Shoshoni guide led them. Then, when they reached Lolo Pass on September 13, 1805, they found that they had made a great unnecessary detour to the south in searching out the headwaters of the Missouri. But, at last they were on their way to the Columbia.

Early winter snow made the trip over the Lolo Trail a hard one. And lack of game reduced them to eating horses for subsistence part of the time. Eventually, though, Clark's advance party reached a Nez Perce village on Weippe prairie, September 20, and obtained three horse loads of salmon and roots to send back to the main expedition. Then, upon reaching the forks of the Clearwater below Orofino, the party made dugout canoes and floated down to Snake River, the Columbia, and finally to the Pacific before winter set in.

Returning across the Lolo Trail in the spring of 1806 proved to be difficult. After recovering the horses which they had left in care of the Nez Perce Indians for the winter, the impatient explorers had to camp for a month or more near Kamiah waiting for the snow to melt on the upper trail, and then they started off too soon. Finally, with essential help from Nez Perce guides, they managed to complete their eastbound trip across north Idaho. Although they reported that they had been able to get from the head of navigation on the Missouri to the head of navigation on the Columbia, and that a road could be built to connect the two, they had not found a very practical early route across Idaho—at least in comparison with other routes that soon were discovered. But they had established friendly contact with the Indians of north and south Idaho, and had prepared the way for the fur trade which was to bring white explorers to all parts of Idaho.

REFERENCES FOR ADDITIONAL READING:

- Thwaites, Reuben Gold, editor *Original Journals of the Lewis and Clark Expedition, 1804-1806* (New York: Dodd, Mead, & Company, 1904), 7 volumes.
De Voto, Bernard Augustin, editor, *The Journals of Lewis and Clark* (Boston: Houghton

Mifflin, 1953), 504 pages. A condensation of the Original Journals.
Fisher, Vardis, *Tale of Valor* (Garden City, New York: Doubleday & Company, 1958), 456 pages.
Gass, Patrick, *Gass's Journal of the Lewis and Clark Expedition* (Chicago: A. C. McClurg & Co., 1904), 298 pages.

Source: *Reference Series #49*
Idaho State Historical Society

Origins of Sacajawea's Name

Sacajawea is an English word of Hidatsa language derivation. A great deal of confusion has arisen concerning its origin. No really satisfactory explanation has been substantiated, largely because Lewis and Clark did not offer more than a vague suggestion, referring to her once as a bird woman whatever that was. For that matter, they generally did not comment upon linguistic origins of other names of members of their expedition either, and no one would have expected them to. They lived in an era when standard spelling of English words was beginning to come into fashion, but their journals (which they did not prepare for scholarly publication) contain considerable variety, including different forms for Sacajawea's name. When a published account of their expedition appeared in 1814, Sacajawea was adopted. This became her English name, although Sacajawea never became aware of that. She did not survive a stay at Fort Manuel in 1812, so she had no opportunity to see that publication. What name she used in 1812 went unrecorded, but it most likely was not Sacajawea anyway.

Whether Sacajawea had any idea at any time that she was referred to by an Hidatsa term for some variety of bird also is unclear and certainly is undocumented. Several problems account for this situation. Shoshoni and Hidatsa personal name practices differ so much from English and French systems that such a problem could not have been explained to her in 1805 or 1806 even if anyone had wanted to. Sacajawea did not speak English or French then, and had to converse with her husband, Toussaint Charbonneau, in Hidatsa which for her was a foreign language that she may have resented anyway. But Lewis and Clark obtained her identification as something like Sacajawea from an Hidatsa source, in this case *sa kaa ka wiiya* (a highly simplified transcription provided by Norman Bowers, a thoroughly competent Hidatsa linguist), which still can be recognized as their term for some kind of bird. Lewis and Clark learned of this designation through their Hidatsa interpreter Sacajawea's French husband, Toussaint Charbonneau. She may or may not have responded to such a name, but transcripts of ordinary conversation to determine that issue are unavailable. Since she could not communicate with expedition members anyway, except through non verbal means, she would have had a hard time identifying her name in alien conversation that she did not understand. Sacajawea is not a Shoshoni word, and French and English people would have had no way of discerning any Shoshoni name that she might have used even if they had wanted to.

Charbonneau's source for his wife's name cannot be ascertained. Several options are possible. Sacajawea most likely would have had more than one childhood Shoshoni name, and various bird (as well as animal) names often were used for young Shoshoni children. (She could have suggested a bird name to Charbonneau, which she would have had to have done in Hidatsa, because Charbonneau did not know Shoshoni. But no evidence supports this kind of explanation. It is only a conceivable, but undocumented, possibility.) Or her Hidatsa captors might have employed a crow, hawk, robin, eagle, or similar designation for her. This alternative certainly is credible, but also is undocumented. Charbonneau at least used an Hidatsa form that, he told Lewis and Clark, referred to Bird Woman. Another possibility, about equally plausible, is that Charbonneau named her Bird Woman. That would not have conformed to Shoshoni tradition better than any other explanation, but Charbonneau presumably had not

studied Shoshoni tradition. Shoshoni women generally took a new name when they married, and Charbonneau or Sacajawea may have arranged that upon her assignment to Charbonneau. Neither one would have had much incentive to retain a name her Hidatsa captors used, and Sacajawea, in particular might have objected to an alien name. An additional variation is that Sacajawea may have selected some variety of bird without consulting Charbonneau or anyone else. She would have had to tell Charbonneau that in Hidatsa if she did so, but that cannot be verified either. She had at least one or more Hidatsa names, but whether her Hidatsa captors ever called her Sa kaa kaa Wiiya cannot be established. Sacajawea and her Shoshoni people had no term for birds that French and English explorers referred to generically, and such a European language name would be total nonsense in their conception.

A variety of legends, mostly twentieth century, grew up concerning Sacajawea, and some of these dealt with her name. But irresponsible twentieth century attempts to tamper with a long established standard English spelling of Sacajawea's name have lacked linguistic merit, although they continue to distort many accounts of her career. If Sacajawea had been an Hidatsa rather than a Shoshoni woman, efforts to replace her English name of 1814 with a more accurate Hidatsa form of 1804 might have been more plausible. Unlike large numbers of her people, Sacajawea preferred to settle down in an Anglo French society after 1806, and certainly wanted to have nothing more to do with her Hidatsa captors. Inflicting a more authentic Hidatsa name upon her scarcely can be defended as an appropriate activity for twentieth century Lewis and Clark historians.

Written by Dr. Merle Wells

Source: Reference Series #910
Idaho State Historical Society

Lewis and Clark Timeline

January 18, 1803	President Thomas Jefferson requested funds for expedition
February 28, 1803	Congress appropriates \$2,500 for expedition
June 19, 1803	Lewis makes offer to Clark to join the expedition
Summer of 1803	Lewis presides over preparations for expedition
August 31, 1803	Lewis and eleven member crew depart down the Ohio River
October 15, 1803	Lewis joins Clark in Kentucky
December 1803	Winter quarters set at Camp Wood, Illinois
May 10, 1804	Expedition leaves St. Charles, Missouri, the westernmost United States village
August 20, 1804	Sergeant Floyd dies, the only member of expedition to die during the trip
November 2, 1804	Set winter camp among the Mandans and Hidatsas at Fort Mandan
February 11, 1805	Sacagawea gives birth to Jean Baptiste Charboneau
April 7, 1805	33 members of expedition head west; remainder take keelboat to St. Louis
August 12, 1805	Lewis crosses Lemhi Pass into present-day Idaho
August 13, 1805	Encounter 3 Shoshoni women and 1 unfurled flag outside of United States
August 17, 1805	Sacagawea recognizes her brother, Chief Cameahwait
August 19, 1805	Clark conducts reconnaissance of Salmon River
September 4, 1805	Expedition crosses Continental Divide at Lost Trail Pass
September 13, 1805	Expedition reenters Idaho at Lolo Pass
September 20, 1805	Clark and advance party enter the Weippe Prairie and meet the Nez Perce

September 26, 1805	Start building canoes near present day Orofino
October 10, 1805	Canoes reach Snake River and leave Idaho
November 7, 1805	Expedition reaches Pacific Ocean, " <i>We are in view of the Ocean</i> "
November 24, 1805	Expedition votes on location of winter camp, select south side
December 7, 1805	Fort Clatsop site selected
December 23, 1805	Expedition members move into Fort Clatsop in what is now Oregon
March 23, 1806	Expedition leaves Fort Clatsop and begins return journey
May 5, 1806	The Corps of Discovery reenter Idaho and camp near mouth of Potlatch River
May 14, 1806	Party makes camp at "Camp Chopunish" along the Clearwater River near present day Kamiah
May 27, 1806	Sergeant Ordway and three men head for Indian fishing grounds on Snake River
June 2, 1806	Ordway party returns from Snake River and the Camas Prairie
June 9, 1806	Party departs for the Lolo Trail
June 17, 1806	Expedition finds deep snow and conducts their only retreat
June 24, 1806	Expedition departs Weippe area in the second attempt to cross the trail
June 28, 1806	Expedition reaches Lolo Pass and leaves Idaho
July 3, 1806	Party splits in two; Lewis heads east along the Blackfoot River; Clark heads south
July 26, 1806	Lewis' group kill two Blackfeet attempting to steal horses; only hostile deaths on the trip
	The two groups rejoin in present day North Dakota
September 23, 1807	The expedition returns to St. Louis. Sargeant Patrick Gass' journal published. Meriwether Lewis appointed Governor of Upper Louisiana
October 9, 1809	Meriwether Lewis dies at age 35 in Tennessee
December 20, 1812	Sacagawea dies at Fort Manuel, age about 25 (c.1788-1812) William Clark appointed Superintendent of Indian Affairs by President Monroe
1838	William Clark dies at age 68 in St. Louis, Missouri
May 16, 1866	Jean Baptiste "Pomp" Charboneau dies in Danner, Oregon
April 2, 1870	Last living member of the expedition, Patrick Gass, dies at age 99

For Additional Information on the Lewis and Clark Expedition contact:

Idaho Lewis and Clark Trail Committee
c/o Lewis and Clark Information Center
415 Main Street
Lewiston, ID 83501
208-799-2249
keithp@lscsc.edu

Lewis and Clark Trail Heritage Foundation, Inc.
PO Box 3434
Great Falls, MT 59403
1-800-701-3434
www.lewisandclark.org

Idaho State Historical Society
1109 Main Street, Suite 250
Boise, ID 83702

Idaho Chapter, Lewis and Clark Trail
Heritage Foundation, Inc.
804 E. Pennsylvania Lane
Boise, ID 83706
SchorzA383@aol.com

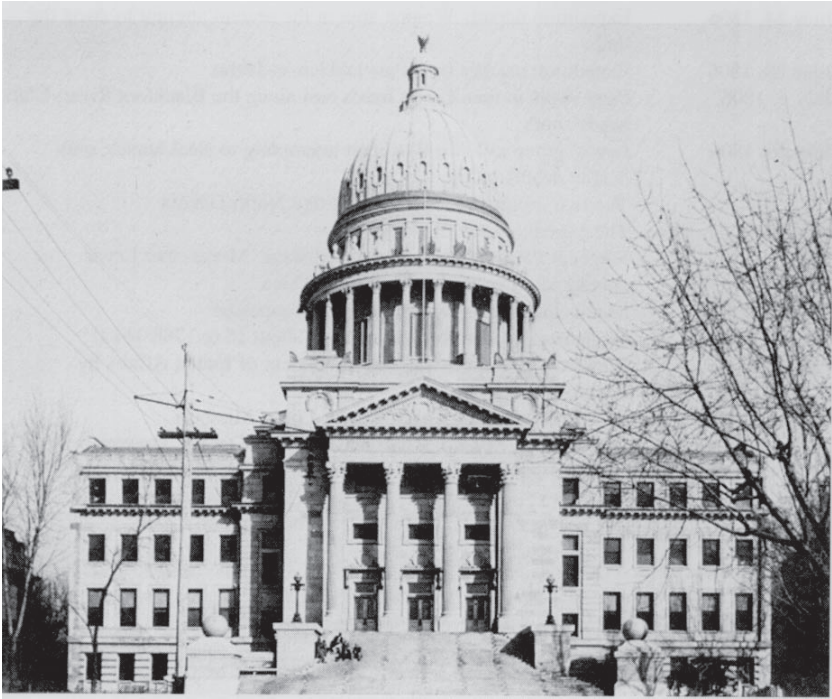
Idaho State Capitol

Boise, in the southwestern Idaho area known as the Treasure Valley, became the territorial capital in 1865 and the state capital when Idaho was admitted to statehood in 1890.

Territorial Capitol

More than twenty years after the Idaho legislature located the capital in Boise, and after several unsuccessful attempts to get the U.S. Congress to build a capitol, territorial secretary D.P.B. Pride persuaded the legislature to appropriate \$80,000 for a territorial capitol building in Boise. The legislature approved the act authorizing the issuance of bonds on February 2, 1885. However, construction was delayed when residents of the city of Hailey obtained an injunction. They felt that the capitol should be located at Hailey.

The building of red brick in the Norman style of architecture was finally completed in 1886. It measured 123' X 81' with five floors including the basement, but it had no indoor plumbing. It was used from 1886 to 1912



The Capitol's central block before the wings were added.

State Capitol

In 1905 the legislature created the Capitol Building Commission, with the power to issue bonds, negotiate and sign contracts, and approve architectural plans. The commission purchased Central School which stood in the block next to the territorial capitol and also negotiated the purchase and closure of Seventh Street between Jefferson and State Streets in order to enlarge the building site.

Construction of the present building was begun in 1905. The original phase included only

the central section and dome. The architectural design was supplied by J.E. Tourtellotte and Company. It is in the standard neoclassic style, patterned after the U.S. Capitol. Construction of the central section and dome was completed in 1912. Tourtellotte and Hummel were awarded a contract in 1912 to design wings for the building and construction began in 1919. The Central School building was demolished to make way for the west wing and the Territorial Capitol building was razed for construction of the east wing. The project was completed in 1920.

The final cost of construction was \$2,098,455.05. The building has a total floor area of 201,720 square feet and, including the dome with the 5'7" bronzed solid copper eagle on top, is 208 feet high. The original plans called for a flag atop the dome, but in the course of construction the eagle was substituted. The outside walls are faced with sandstone from state owned Tablerock east of Boise. Convict labor was used to quarry and deliver the sandstone blocks, some weighing up to ten tons. The shape of the sandstone blocks on the first floor resembles logs and gives the lower part of the building the appearance of a log cabin.



Statue of former Governor Frank Steunenberg (1897-1901) stands in front of the State Capitol

Inside the capitol, large pillars of steel and brick covered with a veneer of scagliola (a mixture of granite, marble dust, gypsum and glue) rise in the rotunda to the dome and central structure of the building. The scagliola veneer was created by an entire family of Italian artisans. In 1976, the veneer on the pillars was repaired by injecting marble dust and glue into the cracks with hypodermic needles. The surface was then covered with a polyurethane finish to protect it.

The corridors, floors, wainscoting and base throughout the building consist of 50,646 square feet of artistically carved marble. There are four kinds blended into the interior: green swirled Vermont marble on the walls, gray Alaska marble with inlaid patterns of near black Italian marble in the floors and four grand staircases, and reddish pink Georgia marble in the trim.

First Floor

From the center of the rotunda on the ground floor, one can look upward to the dome to and admire the decorative stars.

In the rotunda floor is a marble pattern called “compass rose.” Alongside the rotunda stands a sundial composed of minerals found in Idaho. The sundial symbolizes Idaho’s great abundance of natural resources and its major industries.

Also in the rotunda is a large statue entitled *the Patriot* sculpted with a welding torch by Kenneth Lonn, a resident of the Silver Valley. He dedicated this work to the men and women of Idaho’s mining industry.

In the east wing is the office of the state treasurer, where an original vault containing a large 1905 manganese safe is still in use. Portraits of previous treasurers are displayed in the office. Legislative Services offices are also located in the east wing.

Second Floor

There are three impressive entrances to the second floor, from the east, the south, and the west. On the south side of the rotunda is the portico, or main entrance. This is also known as the ceremonial entrance, for it is here that important visitors are greeted and inaugurations are held. A replica of the Liberty Bell, molded in France, stands at the base of the stairs. The bell was given to the State by the Department of the Treasury in 1950. Two giant spheres of Montana granite flank the thirty-three steps of this entrance.

Just inside the portico stands a replica of the statue “Winged Victory of Samothrace.” This is one of many gifts sent by France in 1949 to the capitals of the United States. The original marble statue stands in the Louvre in Paris.

The governor’s suite of offices is located in the west wing. Visitors can view the official portraits of the governor. On the wall of the hallway adjacent to the governor’s office hang portraits of previous governors of the state. The opposite wall holds a display of flags which were carried by Idaho regiments in France during World War I. There is also a glass case containing a sample of the governor’s official china, glassware, and silverware, all of which was donated to the state.

The lieutenant governor’s office is also located in the west wing, just opposite the governor’s office.

On the north side of the second floor rotunda is the statue of George Washington astride a horse. This work was carved from pine by Charles Ostner, a German immigrant. Ostner, working at night by candlelight from a postage stamp likeness, took four years to carve the figure. The statue was painted bronze and presented to the Territory of Idaho in 1869. It stood on display on the capitol grounds until 1934, when due to weather damage, it was brought indoors and covered with gold leaf.

To the rear of the George Washington statue is the attorney general’s suite of offices. These offices were used by the Idaho Supreme Court justices until the new supreme court building was constructed in 1970. Many of the original lamp fixtures, some with very rare fire opal glass globes are visible in the main office. A fire broke out in the attorney general’s office

on January 1, 1992, causing approximately 3.2 million dollars in damage. Restoration was completed in two and one-half years.

In the east wing is the office of the Secretary of State. In the reception area is the official copy of the Great Seal of the State of Idaho. The original is in safe keeping at the State Historical Museum. Portraits of previous secretaries of state are displayed in the office lobby.

Third Floor

The legislative chambers are located on the third floor, the senate in the west wing and the house of representatives in the east wing. Committee rooms and offices surround each chamber. Both chambers were remodeled in 1968. Also on this floor is the former Idaho Supreme Court room. All of the furnishings and decorations are symbolic of justice, law and mercy. Ten torch-like lights mimic those in the U.S. Supreme Court chambers. This room is now used for hearings and committee meetings of the legislature's Joint Finance and Appropriations Committee (JFAC).

Fourth Floor

On the fourth floor are balcony entrances to the senate and house chambers. From these galleries the public can watch the legislature when it is in session. On the north side of the fourth floor rotunda is a display of flags flown in the Philippines by the First Idaho infantry during the Spanish American War. A large painting of Shoshone Falls on the Snake River near the city of Twin Falls hangs on the south wall of the fourth floor, it is by artist J. C. Cowles. Three historic murals by Dana Boussard, one each for the three geographical regions of the State, hang in the northeast, northwest, and southwest corners of the fourth floor. The representation of North, Southwest, and Southeast Idaho will remind viewers of the state's diversity as well as its unity.

Basement

Sections of the basement have been remodeled to provide office space for legislative support staff. The Secretary of State's Commercial Division utilizes the west end of the basement. Remodeling has added office space for the news media. Much of the space is still used for storage and building services. Access to the tunnel which connects many of the buildings in the mall is from the basement.

Grounds

The grounds contain several notable trees, some of which were planted by U.S. Presidents. Among them are the Water Oak planted by President Benjamin Harrison on May 8, 1891, President Harrison had one year earlier signed a proclamation for Idaho to become a state, a Rock (Sugar) Maple planted by President Theodore Roosevelt on May 28, 1903, and the Ohio Buckeye planted by President William Howard Taft on October 9, 1911. Also on the east lawn is a maple tree planted in memory of Martin Luther King, Jr. On the west lawn is an oak tree from the Tree of Gernika brought to Idaho in 1981 from the Basque Country in northern Spain, as a symbol of Basque freedom and independence.

Just to the east of the ceremonial entrance is the Ruth G. Moon Rose Garden, in honor of the former state treasurer who served from 1945-46, 1955-59.

There are two monuments on the grounds. On the east lawn is the Pioneer Monument paid for by 2,777 school children of Boise on May 8, 1906 to perpetuate the memory of the Old Oregon Trail. On the west lawn is a monument erected by the ladies of the Grand Army of the Republic in August of 1935 in honor of the Grand Army of the Republic (organization of Union Army veterans).

On the west lawn near Jefferson Street is an old "Model 1840" cast iron sea coast gun used by the confederacy in the Civil War. This was obtained by State Treasurer C.A. Hastings with the help of Senator Borah.

Directly across Jefferson Street from the main entrance is the Steunenberg Monument.

The statue of Governor Frank Steunenberg, who was assassinated in 1905, was cast by Gilbert P. Riswold and dedicated in 1927. The monument, and the adjacent Frank Church Capitol Park to the east, are owned by Boise City. The city was granted the land by the state in exchange for the closure of Seventh Street to allow for the enlargement of the capitol building site.

Capitol Mall

The capitol building sits in the southwest corner of the mall complex, which is bounded by Jefferson Street on the south, Eighth Street on the west, Washington Street on the north, and Third Street on the east. Since 1963 six new structures have been built in the complex. These include the State Library and Archives, the Supreme Court Building, the Pete T. Cenarrusa building, a five story parking structure, the Len B. Jordan Building, and the Joe R. Williams Building.

The mall area includes many older buildings as well: the Ada County Courthouse, Marion Hall, and the Governor Alexander House built in 1897 by Governor Moses Alexander.

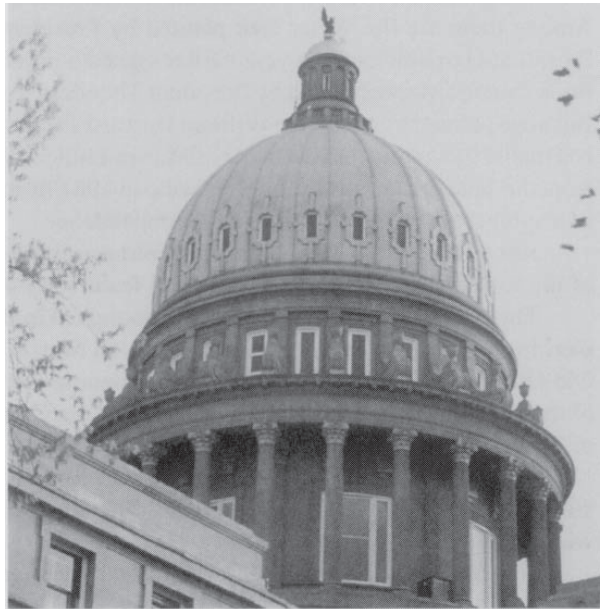
All of the mall buildings are heated with geothermal water. Idaho's Capitol building is the only one in the United States heated by geothermal water. A pumping station in the parking lot north of the Len B. Jordan Building can provide enough hot water to heat 750,000 square feet of building space on all but the most severe winter days. The 3,000 foot well can produce about 1,000 gallons per minute of water at 165° F under natural artesian pressure. The system was first used in the winter of 1982 - 83, and is projected to save about \$150,000 per year in natural gas heating bills.

Capitol Restoration

Idaho's State Capitol is our state's most treasured building. Within its beautiful sandstone walls, laws have been passed, issues debated and citizen rights safeguarded for nearly a century. To ensure the Capitol building's long history and legacy, the Idaho Capitol Commission was appointed by Governor Phil Batt in July 1998. The mission of the Idaho Capitol Commission is to restore and preserve the Capitol to its original splendor.

For additional information on the restoration of the State Capitol:
<http://www.idahocapitolcommission.org/>

Idaho Capitol Dome



Idaho History Chronicle

8,000 to 14,000 years ago: Paleo-Indian big game-hunters, with Clovis (11,500 to 12,500 B.P), Folsom (10,500 to 11,000 B.P), and Plano (8,000 to 10,500 B.P) cultures.

200 to 8,000 years ago: Archaic-Indian culture, with permanent houses (5,000 years ago) and bows and arrows and pottery (300 to 1,500 years ago) coming into use.

200 to 260 years ago: Shoshone bands obtained horses for transportation but were decimated by smallpox spread from European sources.

1743 Discovery of the Rocky Mountains somewhere in the vicinity of Yellowstone Park made by Pierre De la Verendrye, while in search of a western sea.

Northwest Territory 1803-1847

- 1803** The Louisiana Territory, which extended west of the Mississippi to Idaho, purchased by the United States from France for \$15 million.
- 1805** Captains Meriwether Lewis and William Clark enter area which would become Idaho at Lemhi Pass, and cross into north Idaho over the Lolo Trail August 12. Lewis and Clark canoe past Spalding October 8, meet with Nez Perce Indians at Weippe Prairie.
- 1806** Lewis and Clark spend more than six weeks with the Nez Perce Indians in the Kamiah area before returning eastward across the Lolo Trail.
- 1809** David Thompson constructs Kullyspell House by Lake Pend Oreille, first non-native establishment erected in the Northwest, built for the Northwest Fur Company.
- 1810** Missouri Fur Company establishes Fort Henry near St. Anthony, first American fur post west of Rocky Mountains.
- 1811** Pacific Fur Company expedition, the Astorians, explore the Snake River Valley on their way to the Columbia River. Led by Wilson P. Hunt, the westward journey enters the Boise Valley.
- 1812** Donald Mackenzie establishes a winter fur trading post at Lewiston for the Astorians. Robert Stuart, on his return from Astoria, opens much of the Oregon Trail and is the first Euro-American to use South Pass (Wy).
- 1813** John Reid starts fur trading post on the lower Boise River, but Bannock Indians wipe it out in 1814.
- 1818** Donald Mackenzie makes first exploration of southern Idaho with his Snake River expedition of trappers. Treaty of Joint Occupation between Great Britain and the United States leaves Oregon Territory (including Idaho) open to citizens of both nations.
- 1819** Donald Mackenzie held a rendezvous with Native Americans on the Boise River. Adams-Onis treaty between Spain and the United States established Idaho's future southern border on the 42nd Parallel.
- 1821** Hudson's Bay Company and North West Company merged.
- 1822** William Ashley organized the Rocky Mountain Fur Company, which instituted the practice of annual rendezvous.
- 1823** Battle fought in Lemhi Valley between men of the Snake River country expedition and the Piegan Indians.
- 1824** Alexander Ross and Jedediah Smith lead separate expeditions in exploring much of the Salmon River country. Peter Skene Ogden begins trapping in Idaho. Russia cedes Northwest Territory to United States in a treaty.
- 1827** Rendezvous at Bear Lake for fur trading.
- 1829** Rendezvous held at Pierre's Hole, now known as the Teton Basin, where hundreds of mountain men and fur trappers congregated.
- 1830** Rendezvous with the Indians held on the Blackfoot River, where competition in fur trading became intensely keen.

- 1831** Fur trappers of the Rocky Mountain Fur Company, led by Kit Carson, winter on the Salmon River.
- 1832** Captain B.L.E. Bonneville leads the first crossing of the Rocky Mountains in covered wagons. The company reaches the Lemhi River on September 19. Rendezvous at Pierre's Hole. Battle of Pierre's Hole occurs July 18 between American fur trappers and the Gros Ventre Indians.
- 1834** Fort Hall, established by Americans under Captain Nathaniel Wyeth, becomes a hub for trails and roads to the western parts of the United States. Fort Boise erected by the Hudson's Bay Company near the mouth of the Boise River.
- 1835** Reverend Samuel Parker, guided by Nez Perce Indians, selects sites for missions.
- 1836** Henry Harmon Spalding establishes a Nez Perce Indian mission near Lapwai, where he prints the Northwest's first book, establishes first school, develops Idaho's first irrigation system and grows the state's first potatoes. Eliza Spalding and Narcissa Whitman are first EuroAmerican women to cross the Continental Divide.
- 1837** First white child born in Idaho is Eliza Spalding born at Lapwai.
- 1839** Henry Spalding starts publishing the Bible in Lapwai on the earliest printing press in the Pacific Northwest. Chief Timothy, the first native Christian leader, baptized November 17.
- 1840** Father Pierre Jean de Smet begins missionary work in Idaho.
- 1842** Father Nicholas Point establishes the Jesuit Coeur d' Alene Mission of the Sacred Heart near Saint Maries. The Mission moves to a site near Cataldo in 1846, and is transferred in 1877 to Desmet where it stands today.
- 1843** Oregon Trail wagons entered Idaho near Montpelier, passed by Fort Hall, then westward south of the Snake River to the ford below Salmon Falls, then to Fort Boise, crossing the Snake River into Oregon.
- 1846** Sacred Heart Mission established on the Coeur d'Alene River. The United States acquires all land south of 49 degrees longitude by a treaty with Great Britain.

Oregon Territory 1848-1853

- 1848** Oregon Territory established.
- 1849** Over 20,000 emigrants who join the gold rush come through southeastern Idaho on the California Trail. Heavy traffic continues on the trail for many years. U.S. Military post, Cantonment Loring, established near Fort Hall.
- 1852** French Canadians discover gold on the Pend Oreille River.

Oregon and Washington Territories 1853-1858

- 1853** Construction of the Cataldo Mission completed. Washington Territory established. Idaho divided between Washington and Oregon.
- 1854** Twenty-one emigrants led by Alexander Ward massacred in Boise Valley by the Snake River Indians. This event leads to the closing of Fort Boise the next summer and Fort Hall in 1856.
- 1855** Salmon River Mission (Fort Lemhi) established by Mormon missionaries.
- 1857** Oregon's eastern boundary (Idaho's western boundary) established by Oregon constitutional convention.
- 1858** Bannock Indians attacked the Mormons at Fort Lemhi, killing two and driving the remaining back to Utah.

Washington Territory 1859-1862

- 1859** Oregon admitted as a state, all of Idaho included in Washington Territory. Nez Perce Indian Reservation established.
- 1860** Idaho's oldest town, Franklin, is founded just north of the Utah border on April 14. Miss Hannah Cornish starts the first school for white children in Idaho. Gold discovered on Orofino Creek in August, leads to the establishment of Idaho's oldest mining town, Pierce. Mullan military wagon road built just north of Coeur d'Alene.
- 1861** Lewiston established as a service community for Idaho mines on May 13. Major mining strikes near Pierce, Florence, Idaho City and Silver City.
- 1862** Homestead Act established. First newspaper published in Idaho is the *Golden Age* in Lewiston. George Grimes and a party of prospectors establish the Boise Basin mines, leading to creation of Idaho City. Packer John's Cabin built between New Meadows and McCall. Gold discovered near present day Warren. Fort Lapwai established as a military post near Lewiston.

Idaho Territory 1863-1890

- 1863** Massacre of Bear River, one of the West's largest Indian battles, is fought near present-day Preston. Idaho Territory organized, capital at Lewiston. President Abraham Lincoln signed the act establishing the territory on March 4. Soda Springs founded by Colonel Patrick Conner. *Boise News* of Idaho City issues first copy September 29. Mining begins in the Owyhees. Fort Boise established at Cottonwood Creek by Major Pinckney Lugenbeel and the U.S. Cavalry. The townsite of Boise laid out by merchants under the lead of Cyrus Jacobs. First general election held October 31. First county established: Owyhee County, December 31.
- 1864** A resolution to make Boise the capital passes December 7. Public school system established for the territory. Ben Holliday establishes Overland stagecoach line. The *Idaho Statesman* begins tri-weekly publication in Boise. Ada, Alturas, Boise, Idaho, Kootenai, Lah-Toh, Nez Perce, Oneida and Shoshone counties created.
- 1865** Boise becomes the capital of Idaho. J.M. Taylor and Robert Anderson erect bridge across Snake River near present day Idaho Falls. Boise-Rocky Bar stage begins operations, later extended to Silver City.
- 1866** Gold discovered at Leesburg in Lemi County. Survey of public lands begun, L.F. Cartee surveyor. Congress passes Federal Lode Mining Act. State of Columbia proposed by the Idaho Legislature in a petition to Congress, to include all the lands in western Montana, northern Idaho, and eastern Washington. Telegraph connects Virginia City, Montana and Salt Lake City, Utah on November 2.
- 1867** Gutzon Borglum, Mount Rushmore sculptor, born in Bear Lake County March 25. Episcopal Bishop Daniel S. Tuttle arrives in Boise October 12. Idaho Legislature repeals oath of allegiance to U.S., a riot commences and Federal troops are called out. Lah-Toh County abolished, territory annexed to Kootenai County. Fort Hall Indian Reservation established by proclamation, for Shoshoni. Coeur d'Alene Indian Reservation also established.
- 1869** Statue of George Washington, carved from native wood by Charles Ostner, is unveiled on the capitol grounds at Boise. Idaho State Law Library established. Placer gold strike made at Oro Grande. Union Pacific and Central Pacific railroads complete transcontinental railway at Promontory Summit, Utah on May 10, improves transportation to Idaho. Chinese workers flock to Idaho mines. Fort Hall Indian Reservation set aside by President Ulysses S. Grant for Shoshonis and Bannocks of southern Idaho. First telegraph office established at Franklin, linking the town

- with Salt Lake City. Lemhi County created.
- 1870** Idaho population: 14,999 later census figure shows 17,804 as Utah-Idaho border was not clearly established. Caribou gold rush in southeastern Idaho. Fort Hall established as a military post.
- 1872** U.S. Assay Office and Idaho prison completed. Strike drives Chinese labor out of Owyhee mines.
- 1873** Coeur d'Alene Indian Reservation set aside by President Ulysses S. Grant for the Coeur d'Alene and Spokane Indians.
- 1874** First railroad in Idaho, Utah Northern reaches Franklin. Idaho's first daily newspaper, *The Owyhee Daily Avalanche*, issued at Silver City October 17. Telegraph reaches Silver City.
- 1875** Lemhi Indian Reservation set aside by President Ulysses S. Grant for Shoshonis, Bannocks, and Tukuarikas. Bear Lake County created. Bank failure ruins Silver City and South Mountain Mines.
- 1877** National Desert Land Act passed by Congress for reclaiming land by irrigation. Nez Perce Indian War: Battle fought at White Bird on June 17th, Battle of Clearwater fought July 11 and 12, fighting then moved into Montana. The war ended on October 5th with the surrender of Chief Joseph and the Nez Perce. Duck Valley Indian Reservation set aside by President Hayes for the Western Shoshonis and Paiutes.
- 1878** Bannock Indian War: Bannocks were led by Chief Buffalo Horn, and Paiutes led by Chief Egan. Battles fought at South Mountain and Bennett Creek. Fort Sherman, originally Camp Coeur d'Alene, established on Lake Coeur d'Alene.
- 1879** The Sheepstealer Indian War: battles fought at Big Creek and Loon Creek. Indians surrender September 1. Utah Northern railroad completed within Idaho on its path from Salt Lake City to Helena, Montana. Cassia and Washington counties created.
- 1880** Idaho population: 32,619. Discovery of lead-silver lodes in the Wood River area, the rush to Bellevue, Hailey and Ketchum transforms southcentral Idaho. The Boise and Lewiston Independent School Districts created. North Idaho Annexation political party forms to counteract the powerful "Boise Ring."
- 1881** Historical Society of Idaho Pioneers forms to collect and preserve a reliable history of the early settlement of the territory. The *Hailey Times* begins daily publication. Wells Fargo office established at Challis. Custer County created. Earthquake centered 20 miles east of Mount Idaho August 9.
- 1882** Northern Pacific Railroad completed across the northern part of the Territory. Construction began on the New York Canal in Ada County. State's first electric light at the Philadelphia Smelter near Ketchum.
- 1883** First telephone service in Idaho commenced at Hailey October 1. Rexburg is founded. Oregon Short Line reaches Weiser, connecting Idaho to the Pacific Coast.
- 1884** Coeur d'Alene gold rush, followed by Tiger and Polaris mines opening lead-silver operations. The Oregon Short Line arrives in Ketchum August 19. Freight and passenger service begins on Coeur d'Alene Lake. Wallace is founded.
- 1885** The legislature approves construction of Territorial Capitol building at an expense of \$80,000. Test Oath Act adopted by legislature, designed to bar members of the Church of Jesus Christ of Latter-day Saints from voting and holding public office. Legislature locates insane asylum at Blackfoot. Famous poet Ezra Pound born at Hailey October 30. Bingham County created. Bunker Hill and Sullivan mines begin operation.
- 1886** Utah Northern merges with Oregon Short Line and joins Union Pacific system. Separate bills to annex north Idaho to Washington Territory pass each chamber of Congress, but are not reconciled. Construction on the Territorial Capitol completed. Nampa city platted.
- 1887** Wardner miner's union established after wage reductions at Bunker Hill and

Sullivan mines. Compulsory education law passed. A bill to annex north Idaho to Washington Territory passes Congress, but is not signed by President Cleveland and does not become law.

1888 Ricks Academy, now known as Brigham Young University - Idaho, established in Rexburg. Latah County created by U.S. Congress.

1889 As a conciliatory move to keep north Idaho from seceding, the Territorial Legislature locates the University of Idaho at Moscow. Constitutional convention composed of sixty-eight members meets at Boise July 4 and after laboring twenty-eight days, forms and adopts constitution for the state of Idaho August 6. Constitution is ratified by the people on November 5 by a vote of 12,398 to 1,773. Fire in Hailey causes \$750,000 worth of damage. Elmore county created.

State of Idaho 1890 - Present

1890 Idaho population: 88,548. Idaho admitted to the Union as the 43rd state on July 3, signed into law by President Benjamin Harrison. Great Northern Railroad completed across the northern part of the state. Congress passes Federal Forest Reserve Act. First legislative and statewide elections held. First session of the Idaho Legislature meets.

1891 Great Seal of the State of Idaho, a design drawn by Miss Emma Edwards, with the Latin motto "Esto Perpetua" adopted. Idaho forest reserves created. Boise's electric street railway commences operation on August 22. College of Idaho opens in Caldwell October 9. Canyon and Alta counties created. President Benjamin Harrison plants Water Oak on capitol grounds.

1892 High freight rates and low silver prices close Coeur d'Alene mines January 16. The Farmers Alliance and the Knights of Labor organize the Idaho Populist Party in Boise May 26. Martial law commenced in the Coeur d'Alenes on July 14 following the dynamiting of the Frisco Mill near Burke. University of Idaho opens October 3. Idaho Education Association organized. Timber and Stone Act passes Congress, paving way for commercial timber industry in Idaho.

1893 The "Panic of '93." Lead and silver prices collapsed, Coeur d'Alene mines shut down. Western Federation of Miners formed. Office of State Mine Inspector established. Idaho State Medical Society founded September 12. State Wool Growers Association started at Mountain Home September 25. First state game laws enacted. State Normal Schools (Colleges of Education) established at Lewiston and Albion. Legislature funds state wagon roads to connect north and south Idaho. Bannock and Fremont counties created.

1894 Albion Normal School opens January 8. Nez Perce Indian Reservation allotted to the Indians in parcels of 160 acres each, with the balance to be sold for the Indians' benefit. Congress passes Carey Act, first main Snake River project in Twin Falls. Gold discovered in the Thunder Mountain country.

1895 Comprehensive irrigation law, providing for uniform use of public water, enacted on March 9. Lincoln and Blaine counties created.

1896 Lewiston Normal School dedicated June 3. Idaho becomes first in the nation in production of lead. Montpelier bank robbed by Butch Cassidy August 13. Idaho Legislature calls on Congress to extend the right to vote to women. Idaho Republicans split, Silver Republicans endorse William Jennings Bryan for President. Clashes between sheep and cattle industries culminate in the murder of sheepherders allegedly by "Diamondfield" Jack Davis. Cassia County created.

1897 President Grover Cleveland establishes Bitterroot Forest Reserve which includes much of north Idaho. Legislature acts to protect bison within the state. State Board

- of Medical Examiners established to regulate the practice of medicine.
- 1898** First Idaho regiment of military volunteers called into service for the Philippine insurrection of the Spanish-American War. Fort Hall Indian Reservation allotted to the Indians.
- 1899** Position of State Fish and Game Warden created. Governor Steunenberg calls in federal troops to suppress riot in the Coeur d'Alene mining district following the dynamiting of the Bunker Hill and Sullivan concentrator.
- 1900** Idaho population: 161,772. New York Canal completed. Democrats, Silver Republicans and Populists arrange party fusion for 1900 election. Idaho State Dairymen's Association organized. Idaho Falls incorporated.
- 1901** The Free Traveling Library (now known as the Idaho State Library) established. The Academy of Idaho (now Idaho State University) opens in Pocatello.
- 1902** After concluding that "Diamondfield" Jack Davis had been convicted by mistake, in a case growing out of the most notable incident of the Idaho sheep and cattle wars, the State Board of Pardons freed him. National Reclamation Act passed, providing for federal aid for irrigation.
- 1903** Idaho's hunting and fishing licensing system began. The Idaho Industrial Training School founded at St. Anthony as a reform school for children. First Carey Act land opening at Shoshone. President Theodore Roosevelt plants maple tree on capitol grounds.
- 1904** City of Twin Falls platted. Chief Joseph dies September 21. Milner Dam on Snake River opens Twin Falls area to irrigated farming.
- 1905** \$350,000 appropriated for construction of a new capitol building in Boise, actual construction cost exceeded \$2,000,000. Insane asylum established at Orofino. The first train arrives at Twin Falls August 7. Sawtooth National Forest created. Former Governor Frank Steunenberg assassinated December 30.
- 1906** Steunenberg assassin Harry Orchard implicates three leaders of the Western Federation of Miners in the plot. The largest sawmill in the United States begins operation at Potlatch. Pioneer Monument at capitol grounds erected. "Steward Decree" adjudicates water rights along the Boise River.
- 1907** William E. Borah elected to the U.S. Senate, where he gains an international reputation during thirty-three years of service. William D. Haywood is found not guilty of conspiracy and the assassination of Frank Steunenberg, at the end of an internationally celebrated trial, Harry Orchard sentenced to life in prison for the assassination. Idaho State Flag adopted. Idaho State Historical Society founded. Bonner and Twin Falls Counties created. Weiser baseball player Walter "Big Train" Johnson signs with the Washington Senators.
- 1908** Under President Roosevelt's forest reserve policy, one-half of the state is organized into National Forest reserves. Idaho adopts direct primary and local option over regulation of liquor. Minidoka Dam completed. State Parks established at Heyburn, Shoshone Falls, and Payette Lake. Allotment of Coeur d'Alene Indian Reservation. Provisions for rural high school districts established.
- 1910** Idaho population: 325,594. Devastating forest fire consumes one-sixth of north Idaho's forests, destroying many communities, which leads to adoption of public/private partnership in spotting and fighting forest fires. State banking and highway district laws enacted. Buckeye tree planted on the capitol grounds by President William Howard Taft October 9. Search and seizure law enacted for enforcing liquor laws. Idaho State Sanitarium (now known as the Idaho State School and Hospital) located at Nampa. Adams, Bonneville, Clearwater and Lewis Counties created. Revised revenue laws enacted, providing a new system of assessment, equalization, levy and collection of taxes. Constitutional amendments adopted authorizing initiative, referendum, and recall.

- 1912** State Board of Education established to supervise all levels of education within the state of Idaho.
- 1913** Public Utilities Commission established. Northwest Nazarene College in Nampa founded. First motor vehicle laws enacted by the legislature. Comprehensive system of revenue for state, county, municipal and school purposes enacted. School for the Deaf and Blind opens in Gooding. Franklin, Gooding, Jefferson, Madison, Minidoka and Power Counties created.
- 1914** Moses Alexander first elected Jewish governor in the United States.
- 1915** Arrowrock Dam completed. Columbia and Snake River improvements for navigation to Lewiston completed. Second Idaho Regiment of Infantry Volunteers organized into service at the call of President Woodrow Wilson for the Mexican Border War. The Academy of Idaho (now Idaho State University) becomes the Idaho Technical Institute. Idaho Horse and Cattle Association organized, later to become the Idaho Cattlemen's Association. Benewah, Boundary, Gem and Teton Counties created.
- 1916** Constitutional amendment for statewide prohibition ratified. State highway program begins as part of the national good roads movement.
- 1917** Statewide prohibition goes into effect January 1. Workmen's Compensation System and State Insurance Fund established. Annual state fair established at Boise. Ricks Academy becomes a college and is accredited by the State Board of Education. Butte, Camas, Payette and Valley Counties created. The battleship *Idaho* launched.
- 1918** Non-Partisan League takes over Idaho Democratic primary September 3, subsequently Idaho's primary nominating system is abandoned for twelve years.
- 1919** Administrative consolidation enacted by legislature. Functions of fifty-one departments, boards and bureaus placed under nine administrative departments responsible to the governor. Bureau of Highways created to inaugurate a state highway system. Bureau of Constabulary organized May 18, with Department of Law Enforcement. First Music Week held in Boise. Lava Hot Springs established by Department of Public Welfare. City of Jerome incorporated. Jerome, Clark, and Caribou counties created.
- 1920** Idaho population: 431,866. Agricultural prices begin to deteriorate, creating a crisis which continues through the 1920's. Whitebird Hill grade, connecting north and south Idaho opens. State Capitol completed. Idaho Wheat Growers Association formed. Constitutional amendment increases State Supreme Court from three to five members. Philo Farnsworth, 15-year-old student and inventor from Rigby, develops concepts which lead to invention of television and earn him the name "Father of Television."
- 1922** State budget system established. Radio broadcasting begins in Idaho with station KFAU located at Boise High School under the direction of Harry Redeker.
- 1924** Craters of the Moon National Monument established. Black Canyon Dam completed.
- 1925** Union Pacific Railroad begins mainline service to Boise. State Forestry Board established. William E. Borah becomes Chairman of the Senate Committee on Foreign Relations.
- 1926** The Idaho State Chamber of Commerce organized. Federal air service came to the Northwest with a Pasco, Washington to Elko, Nevada flight with a stop in Boise.
- 1927** American Falls Dam completed. Perrine Memorial Bridge at Twin Falls completed. Palisades Reservoir created. Idaho Technical Institute in Pocatello redesignated the University of Idaho Southern Branch.
- 1928** Restoration of the "Old Mission" church near Cataldo begins. Commercial radio broadcasting begins in Idaho with the purchase of KFAU from Boise High School and renamed KIDO.
- 1930** Idaho population: 445,032.
- 1931** The direct primary restored for statewide offices. State income tax adopted. U.S.

- Forest Service, in cooperation with the state Legislature, creates the Idaho Primitive Area. Legislature adopts “Here We Have Idaho” as state song, the syringa the official flower, and the Mountain Bluebird the state bird.
- 1932** Nonpartisan election of judges to Supreme Court and District Courts enacted. The Idaho Code annotated published. Association of Idaho Veterans of Foreign Wars organized. Boise Junior College opens.
- 1933** North Idaho Junior College established at Coeur d’Alene.
- 1934** Sandpoint Bridge completed. Taylor Grazing Act passes U.S. Congress. Central and northern Idaho experience large mining developments for gold and silver. Idaho becomes first in the nation in silver production.
- 1935** Statewide prohibition repealed and State adopts Liquor Dispensary system. Indian children begin integration into public school system. State employment service established. Two percent sales tax enacted, but rejected by voters in referendum in 1936. Legislature provides for purchase of the site of Spalding Mission as a state park. Martial law declared in Teton County to put down a rebellion of pea pickers.
- 1936** Sun Valley established as a ski resort by the Union Pacific Railway in September. World's first ski chair lift opens in Sun Valley. Martial law declared in Clearwater County during I.W.W. lumber strike. Celebration held in Lewiston to commemorate the 100th anniversary of the founding of Spalding Mission. In March, William E. Borah became Idaho’s first Presidential candidate.
- 1937** Open primary system does away with requirement for declaration of party affiliation.
- 1938** Paving of the north-south highway (U.S. 95) completed. Fish and Game Commission established by initiative. Idaho Senator James P. Pope sponsors Agricultural Adjustment Act.
- 1939** State Junior College district law enacted. Idaho State Police established March 13. Joe Albertson opens his first supermarket in Boise.
- 1940** Idaho population: 524,873. Senator William E. Borah dies January 19. Legislation creating a position of Comptroller to be appointed by the Governor, and taking away many powers of the State Auditor, ruled unconstitutional by the Courts.
- 1941** Gowen Field completed south of Boise and becomes a military air base. J.R. Simplot food dehydrator begins operations in Caldwell.
- 1942** Farragut Naval Training Station established at Lake Pend Oreille. A Pocatello army air base and gun relining plant established. Japanese-Americans placed in internment camp at Hunt. Two anti-liquor initiatives rejected by the voters. Mountain Home Air Base site was approved.
- 1944** Mountain Home Army Air Field officially opened.
- 1945** State Tax Commission established. Idaho’s first phosphate processing plant constructed by the J.R. Simplot Company.
- 1946** Most recent Idaho Code published. A teacher’s retirement system established. Election of Idaho’s governor and other state officials for four-year terms begins. Two anti-liquor initiatives and an antigambling initiative defeated.
- 1947** A state school reorganization plan enacted. University of Idaho Southern Branch at Pocatello becomes Idaho State College. State Board of Corrections established. Idaho State Archives established.
- 1948** Bureau of Reclamation begins plans to construct a Hell’s Canyon dam in the Snake River for flood control. Idaho Senator Glen Taylor runs for Vice-President on Progressive Party ticket.
- 1949** National Reactor Testing Station near Arco established.
- 1950** Idaho population: 588,637. State Highway Department established with provisions for nonpolitical administration.
- 1951** National Reactor Testing Station becomes site of the world's first use of nuclear

- fission to produce electricity. Experimental Breeder Reactor No. 1 is later designated a National Landmark. State teacher's colleges at Lewiston and Albion are closed.
- 1952** Anderson Ranch Dam completed.
- 1953** Television comes to Idaho with KIDO-TV (now KTVB) in Boise July 12. C.J. Strike Dam dedicated. Supreme Court rules against Idaho law legalizing slot machines and other lottery devices.
- 1954** Submarine reactor tested and perfected at the National Reactor Testing Station. Voters approve initiative to regulate dredge mining.
- 1955** State Department of Commerce and Development established. Lewis-Clark Normal School opens at Lewiston. Lucky Peak Dam dedicated July 6. The Atomic Energy Commission lights Arco with electricity generated by atomic energy.
- 1956** Construction of Palisades Dam completed. Construction in Idaho of the National Interstate Highway System commenced. Constitutional amendment ratified to permit a governor to succeed himself for reelection.
- 1958** Boise-Stanley Highway Association established. Voters defeat "Right to Work" initiative.
- 1959** Brownlee Dam completed by Idaho Power Company, one of three dams built on the lower Snake River.
- 1960** Idaho population: 667,191. Seven month strike at Bunker Hill Mine. July and August forest fires in Hells Canyon and Idaho City area. State employee group insurance system established.
- 1961** Oxbow Dam completed on Snake River. W.A. Harriman and E. Rolland Harriman provided that their holdings at Railroad Ranch eventually become a state park, providing that the state establish a professionally managed park system. Ernest Hemingway dies in Ketchum July 2.
- 1962** Lewis and Clark highway (U.S. 12) in the Lochsa Canyon completed.
- 1963** Legislative Council established. Idaho State College in Pocatello attains University status. Lewis-Clark Normal becomes a four year college. Horse Racing Act, to permit pari-mutuel betting, becomes law over Governor's veto (first override in twenty years). Idaho celebrates Territorial Centennial.
- 1964** Combined convention and primary system implemented, parties attempt to restrict the number of state primary candidates appearing on the ballot. Federal Court ends Bible reading in Boise public schools.
- 1965** State parks department, water resource board, and personnel system created. Nez Perce National Historic Park established in north-central Idaho. Boise Junior College given 4-year status as Boise College.
- 1966** Governor Smylie defeated for 4th term. Voters uphold 3 percent sales tax in referendum. Northern Pacific ends passenger service between Lewiston and Spokane.
- 1967** Legislative Compensation Commission established. International Boy Scout Jamboree held at Farragut State Park.
- 1968** Hell's Canyon Dam completed.
- 1969** Annual legislative sessions commence. Boise College was brought into the state system of higher education as Boise State College
- 1970** Idaho population: 713,015. Voters reject proposed revision of Idaho Constitution. Voters pass strict legislative pay initiative. National Farmers Organization stages 120 vehicle caravan to Boise to protest potato prices.
- 1971** Legislature enacts a stream protection law. Last log drive on the Clearwater River. Rail passenger service ends May 1 for all places in Idaho except Sandpoint. Fire destroys \$25,000 worth of property during a riot at the Idaho State Penitentiary.
- 1972** New Idaho Uniform Probate Code goes into effect. Idaho voters return to open primary system. Sawtooth National Recreation Area established, including the

- Sawtooth Wilderness Area. Dworshak Dam completed. Constitutional amendment adopted requiring state government reorganization into no more than 20 agencies. Fire at the Sunshine Mine in Kellogg takes the lives of 91 men.
- 1973** U.S. Congress passes a bill to replace the deteriorating American Falls Dam.
- 1974** State agencies reorganized into 19 departments. Kootenai Indians in northern Idaho declare war on the U.S. government to gain money and land. Voters pass the Sunshine Initiative to require lobbyist registration and political campaign disclosure. Boise State College attains university status as Boise State University.
- 1975** Presidential Preference Primary to be held on the fourth Tuesday of May adopted. White Bird Hill bypass opens June 16. Legislature passes Local Planning and Zoning Act. New prison opens south of Boise. Port of Lewiston opens to ocean-going shipping.
- 1976** Hells Canyon bill creates the scenic Hells Canyon National Recreation Area, and bans construction of hydroelectric projects in the canyon. Senator Frank Church becomes a candidate for President, the first Idahoan since William E. Borah in 1936. The 310 foot high Teton Dam collapses in southeastern Idaho, killing 11 and forcing 300,000 people to flee their homes. Constitutional amendment creates Citizens Committee on Legislative Compensation. The Public Utilities Commission rejects proposal by Idaho Power Company to build an electric coal-fired power plant between Boise and Mountain Home.
- 1977** Governor Cecil D. Andrus resigns to become Secretary of the Interior. Legislature rescinds their 1972 ratification of the Equal Rights Amendment. Many Idaho counties declared disaster areas due to severe drought. Boise, Nampa, Mountain Home, Shoshone, and Pocatello become stops on Amtrak's Seattle-Ogden line.
- 1978** President Jimmy Carter floats the River of No Return in central Idaho. Voters pass initiative limiting property taxes to 1 percent of market value. Pocatello businessman Bill Barlow wins U.S. Supreme Court decision against Occupational Safety and Health Administration.
- 1979** An investigation by the *Idaho Statesman* reveals that plutonium had been injected into the Snake River plain aquifer at the Idaho National Engineering Laboratory. Senator Frank Church becomes Chairman of the Senate Committee on Foreign Relations.
- 1980** Idaho population: 944,038. An 18 hour riot at the Idaho State Prison results in \$2 million in damages. Mount St. Helens erupts, covers north Idaho with volcanic ash. Interior Secretary Cecil Andrus, by executive order, expands the Birds of Prey Natural Area from 31,000 to 482,640 acres. Congress approves the Central Idaho Wilderness Act, establishing the 2.2 million acre River of No Return Wilderness. Congressman Steve Symms defeats Senator Frank Church in the most expensive campaign in Idaho history with over \$4 million spent by the candidates and independent committees.
- 1981** Senator James McClure becomes Chairman of the Senate Committee on Energy and Natural Resources. Keith F. Nyborg, a rancher from Ashton, is appointed ambassador to Finland by President Reagan. "Rabbit Drives" in southeastern Idaho create controversy between animal protection groups and farmers whose crops are devastated by wild jack rabbits. Gulf Resources and Chemical of Houston, Texas announced the closure of the 98-year-old Bunker Hill Mine and Smelter in Kellogg.
- 1982** Legislature outlaws insanity plea for defendants - first in nation. Voters pass record eight constitutional amendments and three initiatives. Governor John Evans puts most state employees on 4-day work week for two months to lower projected budget deficit. Harriman State Park dedicated July 17. Fugitive Christopher Boyce, convicted of selling national security secrets to the Soviet Union, is captured near Bonners Ferry.

- 1983** Legislature imposes temporary 4 1/2 percent sales tax to cover state deficit. Eagle Island State Park dedicated June 25. State Supreme Court declares current legislative apportionment unconstitutional because it divides counties. Several north Idaho local governments pass resolutions to secede from southern Idaho and form a new state. An earthquake measuring 7.3 on the Richter scale kills two Challis children and causes four million dollars worth of damage October 28. The quake, centered in the Lost River Valley, was the largest in the continental United States in 24 years and left a 10-foot high, 15 mile long shear.
- 1984** Supreme Court imposes 42 member Senate, 84 member House in Legislative Redistricting Plan. Christin Cooper of Ketchum wins silver medal in the women's giant slalom at the Olympic games in Sarajevo, Yugoslavia. Harmon Killebrew of Payette is inducted into the Baseball Hall of Fame. Permanent sales tax set at 4 percent. Legislature approves Education Reform bill, allocating \$20 million to improve teacher salaries statewide. Former Senator Frank Church dies April 7. U.S. Representative George Hansen defeated for reelection by Richard Stallings in closest Idaho congressional race in history - 170 votes. Populist Party sues for and obtains ballot status on November 6 General Election. Wallace celebrates centennial. Idaho Power Company and the State of Idaho reach agreement on Snake River Basin water rights.
- 1985** Shortest Legislative session in 12 years - 66 days. Department of Commerce established. National Governor's Conference held in Boise. Jimmy Jausoro, a Basque musician from Boise is one of 12 folk artists nationwide (and the first Idahoan ever) to receive a prestigious 1985 National Heritage Fellowship from the National Endowment for the Arts. Pocatello citizens vote to remove council-manager system of city government in June. Potlatch Corporation closes lumber mills at Lewiston and Jaype (near Pierce), affecting 1,200 workers. Over six million acres of Idaho rangeland are sprayed with pesticides to battle grasshopper infestation.
- 1986** Claude Dallas, convicted in 1982 for killing two Idaho Fish & Game Wardens, escapes from the Idaho State Penitentiary March 30. He is recaptured March 8, 1987 outside a convenience store in Riverside, California. Voters retain right-to-work law in referendum; also approve state lottery initiative. Barbara Morgan of McCall becomes NASA's Teacher in Space designee.
- 1987** Permanent sales tax at 5 percent. Legislature passes mandatory daycare licensing and tort reform legislation. Dry winter leads to severe summer drought.
- 1988** Voters pass constitutional amendment removing prohibition against legislature authorizing a state lottery. Governor Andrus begins temporary ban on shipments of nuclear waste into Idaho.
- 1989** First state lottery tickets sold July 19th. Worst forest fires since 1910, burn thousands of acres in south central Idaho, partially destroying town of Lowman.
- 1990** Idaho Population: 1,006,749. Idaho celebrates Statehood Centennial - July 3. Idaho State Senate split - 21 Democrats and 21 Republicans.
- 1991** Kirby Dam collapses near Atlanta, cutting off electrical power to residents and dumping arsenic, mercury and cadmium into the Middle Fork of the Boise River. Drought persists through fifth consecutive year. Sockeye salmon listed as threatened under the ESA.
- 1992** Fire on the second and third floors of the State Capitol on January 1st caused 3.2 million dollars in damage. Worst forest fire season in Idaho's recorded history. Randy Weaver and Kevin Harris surrender to federal officials on August 31st following a shootout and eleven day standoff at Weaver's Boundary County cabin that left one U.S. Deputy Marshal and Weaver's wife and son dead. Linda Copple Trout becomes the first woman appointed to the Idaho Supreme Court. Snake River Chinook salmon listed as threatened under the ESA.

- 1993** Normal winter and spring precipitation help to alleviate the drought. Kevin Harris acquitted of all charges and Randy Weaver convicted on minor charges following a 60-day federal trial stemming from the 1992 shootout with federal officials in Boundary County.
- 1994** Ezra Taft Benson, native of Whitney, Idaho, died on May 30. Benson had served as U.S. Secretary of Agriculture from 1953 to 1961 and head of the Church of Jesus Christ of Latter-day Saints since 1985. Summer wildfires burn approximately 750,000 acres. Picabo Street wins silver medal in downhill skiing during the Olympic Winter Games in Lillehammer, Norway. Idaho ranks third nationwide in percentage population growth after the state added another 33,000 residents.
- 1995** Phil Batt sworn in as the first republican governor in twenty-five years. Legislature creates the Department of Juvenile Justice. Nuclear waste agreement signed. First year of five years in a row of normal or above normal water/snowpack.
- 1996** Major flooding in north Idaho. President Clinton visits Boise to discuss flooding.
- 1997** New Year's day floods in the Weiser and Payette River drainages of southwestern Idaho. Town of Banks condemned by federal government following mudslides.
- 1998** Picabo Street wins gold medal in giant slalom at Olympic winter games.
- 1999** First shipment of nuclear waste leaves INEEL for permanent storage at the federal Waste Isolation Pilot Project in New Mexico.
- 2000** Idaho Population: 1,211,537. Largest wildfires in recent history, 559,183 acres burn in Salmon-Challis National Forest, Payette National Forest and Bureau of Land Management, Idaho Falls District.
- 2001** Idaho filed suit against federal Grizzly Bear reintroduction plan. U.S. Dept of Labor grants \$1 Million to aid displaced Jaype mill workers. Twenty-four Idaho counties declared drought disaster areas. Governor orders 2% holdback for state agencies and 1.5% holdback for public schools in response to softening economy. Sawmill closings in Cascade and Horseshoe Bend leave only one mill south of the Salmon River. Largest salmon runs since 1978.
- 2002** Closure of the potato processing plant in Heyburn.
- 2003** Longest legislative session in history - 118 days. Sales tax goes to 6 percent. Expansion of Boise municipal airport.